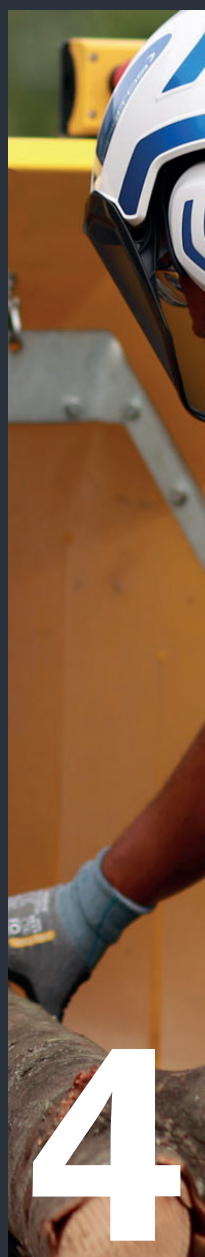


TSINDUSTRIE®



2024
CATALOG

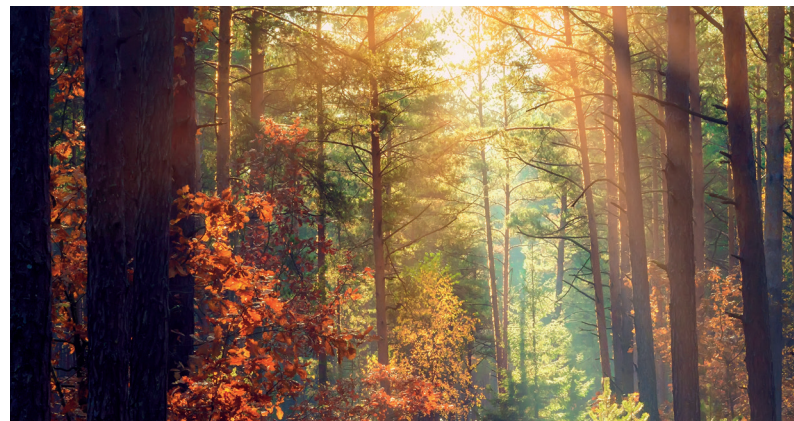
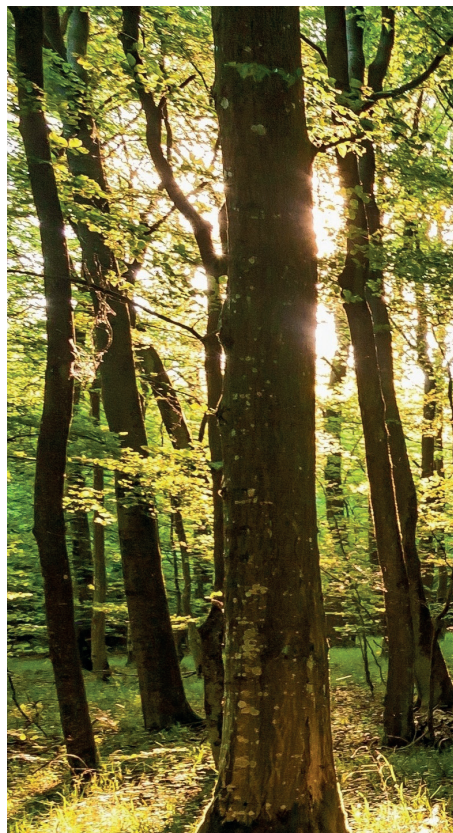


Since 1985, TS INDUSTRIE has specialised in the manufacture and distribution of branch and multi-plant shredders for landscaping professionals. With its 3 ranges of shredders, TS INDUSTRIE covers all needs.

GREEN / SERIES

WOOD / SERIES

ELECTRIC / SERIES



CONTENT

ROTOR SHREDDERS

GREEN/SERIES

GS/PREMIUM P	18
GS/TIGER D	20
GS/TIGER D & GS/TIGER P	21
GS/PYTHON P	22 - 23
GS/PUMA P	24
GS/PUMA D	25
GS/JAGUAR D & GS/JAGUAR PTO	27
GS/JAGUAR D SR-TK	28 - 29
GS/PANTHER D	30 - 31
GS/COBRA D & GS/COBRA PG	32 - 33
TECHNICAL DATA	34 - 35

ROTOR SHREDDERS

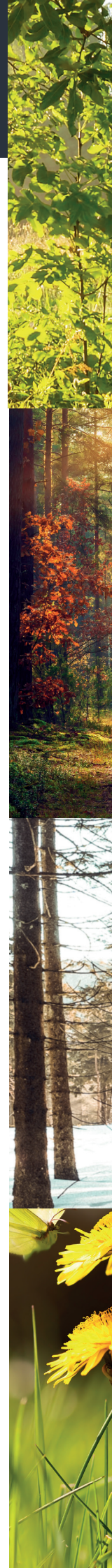
ELECTRIC/SERIES

GS/e PUMA	40
GS/e JAGUAR	41 - 42
GS/e PANTHER	44
TECHNICAL DATA	47

WOOD CHIPPERS

WOOD/SERIES

WS/16 P	51
WS/18 D R-TK	52
WS/18 D & WS/18 DT	53
WS/20 DT LINE	54
WS/PTO	55
WS/23 DT	56
SCHUTZAUSRÜSTUNG	57
TECHNICAL DATA	58 - 59





TSINDUSTRIE®

TSINDUSTRIE®

GS  ePANTHER

ELECTRIC/SERIES

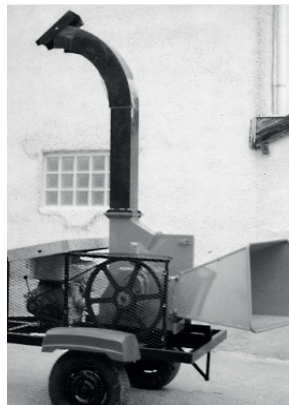
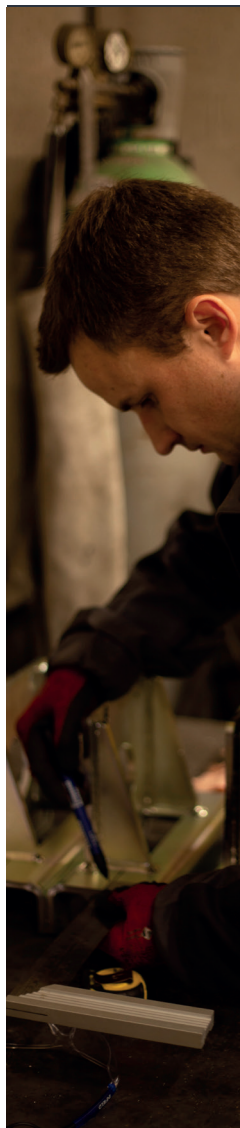
ts-industrie.eu



CHIPPING

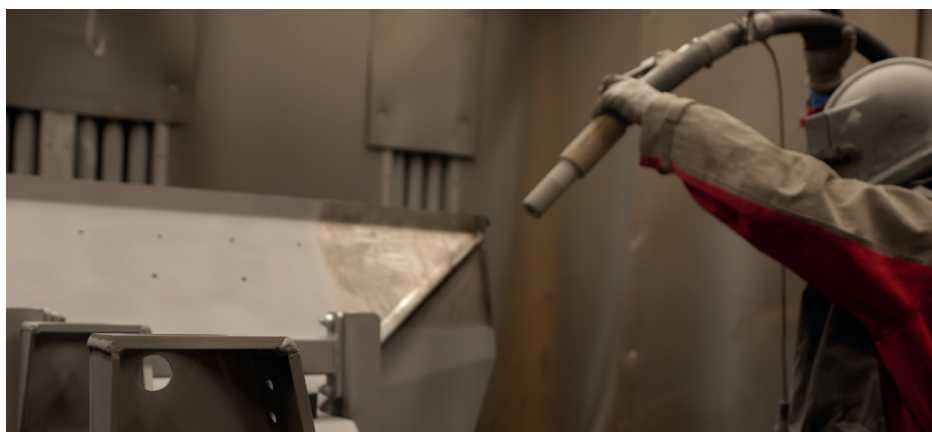
with TS INDUSTRIE

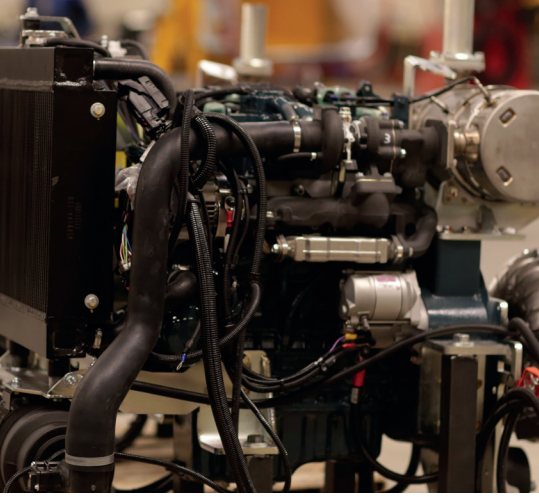
A **UNIQUE** CONCEPT



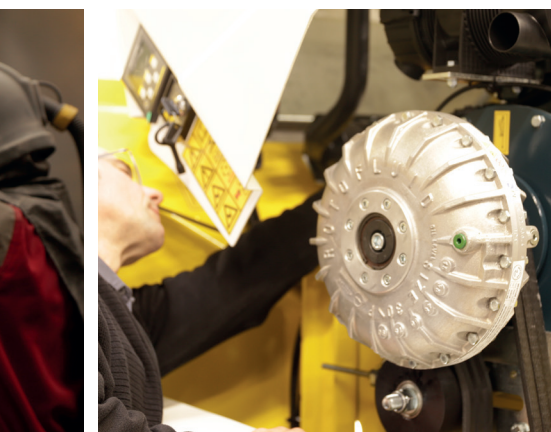
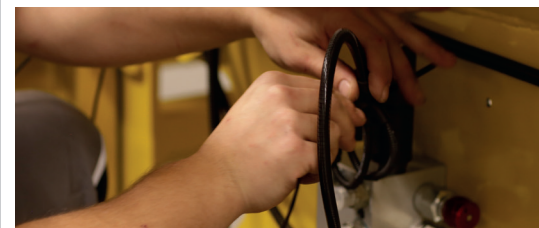
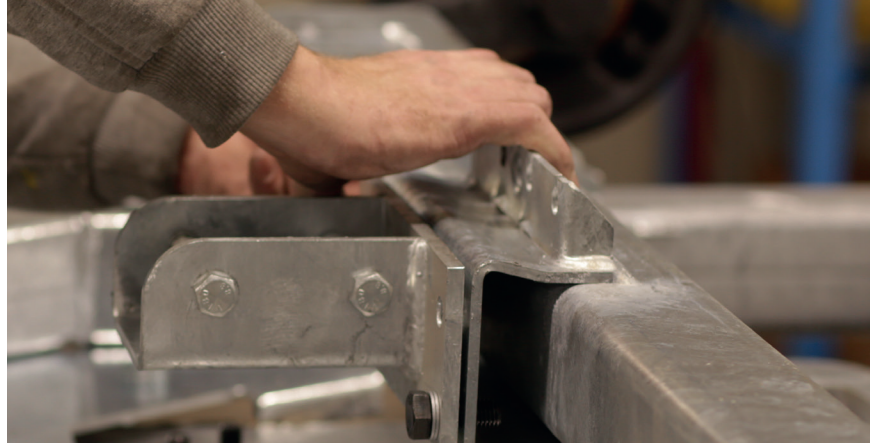
TS INDUSTRIE offers you
large range of products for
all your inquiries

Our R&D team
develop performant
technologies to
create a chipper
that fitS your needs.





We controle the entire production process, to provide premium product.



Driven by passion and commitment, our teams manufacture wood chippers and rotor shredders.

A TECHNICALLY SKILLED TEAM AT YOUR SIDE



TS INDUSTRIE is a team of experts and enthusiasts with a common goal: to offer our clients quality products and premium service.

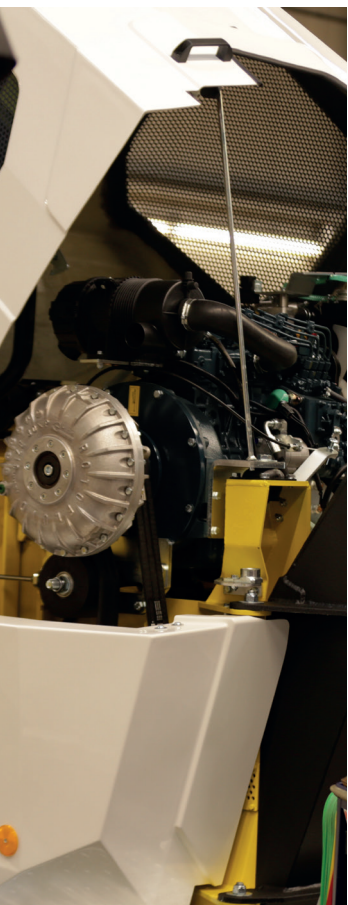


Our in-house technical team provides a support for all your technical inquiries.

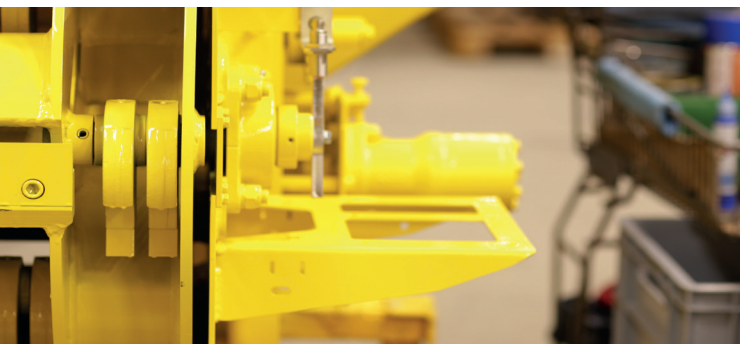




We are at your side to simplify your daily work, with the experienced teams of customer support, after-sales service and spare parts.



Our logistic ensure fast delivery of products and spare parts to guarantee the best service possible.



EXCELLENT
SERVICE

OUR CHIPPING TECHNOLOGIES

Our chippers range includes 2 different product lines:

Green series is developed to shred the mixed greenery. The fibers of shredded material is softened which makes it excellent for composting and mulching. This method is especially efficient with the leafy branches.

The Wood series is perfectly suitable to produce uniform wood chips for the plant protection or to serve as combustion material. All models are perfectly suited for the clean chipping of any tree pruning and mixed greenery.

WOOD CHIPPING

CUTTING DISC



The **cutting disc**, installed on all wood chippers, works with two adjustable blades and counter blade to produce clean cuts and uniform chips.



MIXED GREENS SHREDDING



POWER MIXED ROTOR



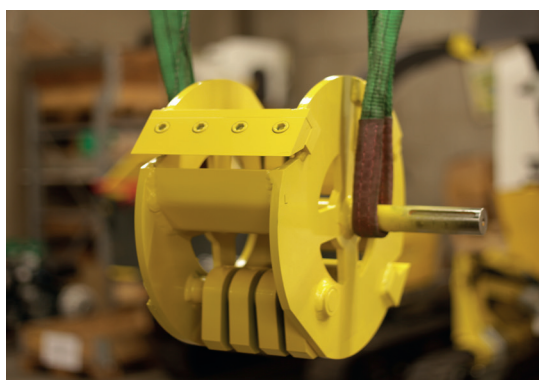
The new generation of POWER MIXED ROTOR is even more productive thanks to a bigger number of hammers and knives. The ventilation chambers help to provide an extra air flow for efficient material evacuation.



MIXED ROTOR



The **MIXED ROTOR** is a patented system that combines both hammers and knives for chipping all types of greens and branches simultaneously and efficiently.



HOW TO RECYCLE CHIPPED MATERIAL

Chipped material created by rotor shredder from different plants is rich in nutrients and decomposes quickly. Therefore, it is perfectly suited for composting and as an organic fertilizer for your plants.

Uniform wood chips are created by the cutting disc technology . They are used for both ornament and protection of your plant beds (i.e. storage of water in the soil, regulation of temperature, etc.) or may also serve as fuel.



MIXED GREENERY MATERIAL

Soil regeneration - Efficient nutrient supply - Water saving - Improved soil profile.



COMPOST

Improves the composition of the soil - Increases its water retention capacity - Stabilises the pH value - Reduces surface erosion - Promotes root formation



ENERGY

Important source of renewable primary energy - Fuels economy - Promotes local supply- Low economic and environmental impact of transport



MULCHING

Allows waste to be left on site - Aesthetics - Reduced irrigation - Nutrient supply - Temperature regulation - Reduced use of fertilisers

THE RIGHT CHOICE OF A CHIPPER

In order to get a machine that fits your chipping needs, you should keep in mind the following parameters: the quantity and the type of material that you usually chip, the diameter of branches, what is your typical working context: forests with difficult access or cities and green area maintenance...



You will find this symbol on each of our pages to indicate **productivity** or quantity of substance.

OUR TECHNICAL ADVANTAGES

TS.COCKPIT

TS.COCKPIT

The last generation of our control unit for reliable operations and easy maintenance.



PILOT SYSTEM AND PILOT SYSTEM SWING

Control unit for reliable operation of chippers with three power levels.



NO STRESS

Regulating system for the speed of the feed rollers. Clogging or stalling of the motor is prevented.



VARIOSTRESS

Setting of NO STRESS according to the chipped material.



CO₂-REDUCTION

Automatic presence sensor that helps to reduce CO₂ emissions and to save energy.



ELECTRIC CONTROLS

Activation of the feeding rollers and convoyer forward and backward.



TURNABLE BLOW-OUT CHUTE

Adapting to all conditions of use.



FOLDABLE HOPPER

Essential and indispensable for transport.



PIVOTABLE TURRET

Guarantees ergonomic and safe working.



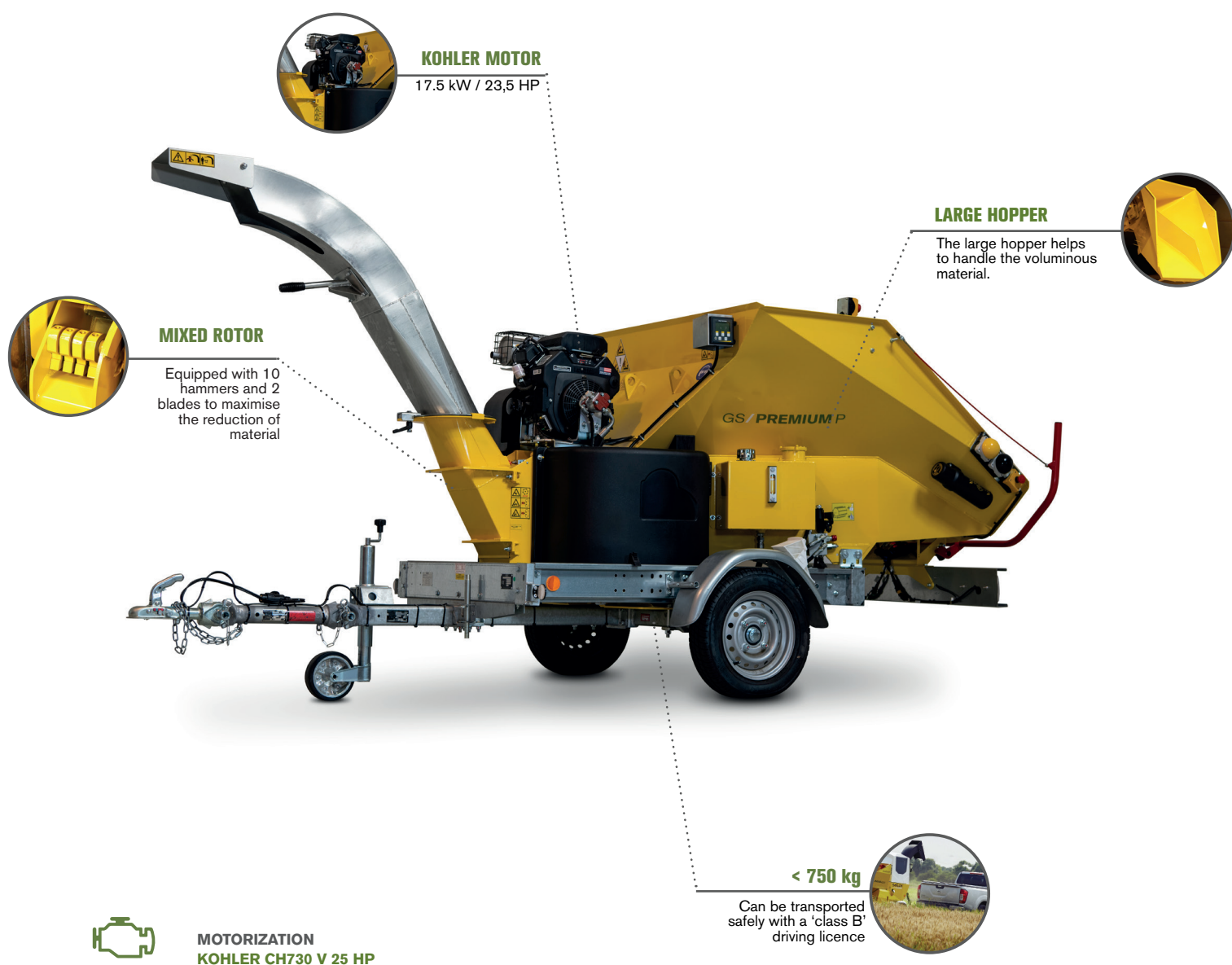
TRACK CRAWLERS

Permit the access to any type of complicated working site.



GREEN SERIES

PREMIUM P



Our PREMIUM P is the user-friendly and real reference product from TS INDUSTRIE. Equipped with a reliable KOHLER 25HP engine and an efficient **MIXED ROTOR** with 10 hammers and 2 blades, it shreds your green waste up to 13 cm. Weighing less than 750 kg, this rotor shredder can be safely transported with a German 'Class B' driving licence. Landscaping professionals appreciate its wide hopper for convenient operations. The PILOT SYSTEM centralize the operation settings of the shredder and thus make this model easy to use.



MIXED
ROTOR



BRANCH
DIAMETER
13 cm



AVERAGE
INPUT
13m³/h



< 750
kg

	PREMIUM P
ENGINE CAPACITY (cm³) - NUMBER of CYLINDERS	725 - 2 CYL.
ENGINE POWER	25 HP
BRANCH DIAMETER (cm)	13
WEIGHT (kg)	745
ROTOR	MIXED ROTOR 10 HAMMERS / 2 BLADES
ROTOR WEIGHT (kg)	85
L x W x H (mm)	3770 x 1600 x 2140
WIDTH OF FEED ROLLER (mm)	250
LOADING HEIGHT HOPPER (mm)	715
REFERENCE	GSPREMIUMP
MAINTENANCE KIT	KITPREMIUMP

TECHNICAL DATA P. 34 - 35

GERMAN REQUIREMENTS FOR CHIPPERS



≤ 750Kg
Zul. Gesamtmasse



≤ 3.500Kg
Zul. Gesamtmasse
Anhänger leichter als Zugfahrzeug



2.000 kg
Zul. Gesamtmasse



1.500 kg
Zul. Gesamtmasse

= 3.500kg



2.001 kg
Zul. Gesamtmasse



1.500 kg
Zul. Gesamtmasse

= 3.501kg



1.500 kg
Zul. Gesamtmasse



1.800 kg
Zul. Gesamtmasse

= 3.300kg

In any case, please check the registration certificate of your vehicle for the permitted towing weight.

TIGER D / TIGER P



**MIXED
ROTOR**



**BRANCH
DIAMETER**
14 cm



**AVERAGE
INPUT**
17m³/h



MOTORIZATION
KUBOTA D902 V 25HP



The TIGER, available with **diesel** or **petrol engine**, is adaptable to all type of application. To transport this shredder weighing less than 750 kg only a German 'class B' driving licence is required.

The TIGER is equipped with a **feed conveyer** and a **wide hopper** for optimum working comfort. Its **MIXED ROTOR** with 8 hammers and 2 blades as well as a **TS.Cockpit** as standard features create the perfect urban machine configuration.

TIGER D


MOTORIZATION
KUBOTA D902 V 25 hp

TIGER P


MOTORIZATION
KOHLER CH730 V 25 hp

	TIGER D	TIGER P
ENGINE CAPACITY (cm³) - NUMBER of CYLINDERS	898 - 3 CYL.	725 - 2 CYL.
ENGINE POWER	25 hp	
BRANCH DIAMETER (cm)	14	
WEIGHT (kg)	745	695
ROTOR	POWER MIXED ROTOR 8 HAMMERS / 2 BLADES	
ROTOR WEIGHT (kg)	45	
L x W x H (mm)	3560 x 1515 x 2060	
WIDTH FEED ROLLER (mm)	250	
LOADING HEIGHT HOPPER (mm)	750	
REFERENCE	GSTIGERD	GSTIGERP
MAINTENANCE KIT	KITTIGERD	KITTIGERP

TECHNICAL DATA P. 34 - 35



Perfect balance between power and capacity.

Our rotor shredder, PYTHON P equipped with 25 HP KOHLER petrol engine to shred your green waste up to 15 cm in diameter. Its weight of 950 kilos and an adjustable drawbar that equipped with brakes allows the shredder to be transported with a German 'Class B' driving licence as long as the total weight is less than 3,500 kg, see overview.

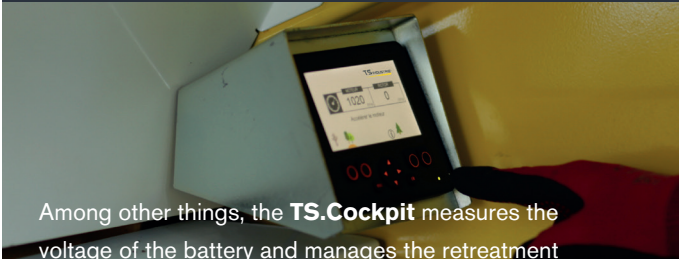
The PYTHON P has the patented **POWER MIXED ROTOR** with 8 hammers and 4 blades.

The **TS.Cockpit** controls the entire machine with **three different power setting levels**. Important maintenance functions can be checked up in one glance.

THE TS.COCKPIT

The **TS.Cockpit** is a control system which withstands outdoor operating conditions: bad weather, vibrations and other daily challenges.

The control of the machine and the selection of the three power levels are done through an intuitive colour display. The three power levels are clearly identified for easy switching from one mode to another:



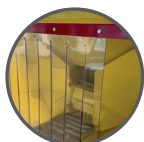
Among other things, the **TS.Cockpit** measures the voltage of the battery and manages the retreatment of exhaust gas. By displaying error codes, it performs intelligent diagnosis of the machine. Requirements for further services and oil changes can easily be detected as well as the settings of the CO2 reduction.

It is a perfect smart assistant for controlling your shredder and for optimising your workflows.




POWER MIXED ROTOR

BRANCH DIAMETER
15 cm

AVERAGE INPUT
22m³/h

FEED CONVOYER

An interlocked feed conveyor of 40 cm reliably carry the material over the entire width

POWER MIXED ROTOR

Equipped with 8 hammers and 4 blades to maximise the reduction of material

TS.COCKPIT

Centralises the control and operation of the machine


MOTORIZATION
KOHLER CH730 V 25 HP

	PYTHON P
ENGINE CAPACITY (cm³) - NUMBER of CYLINDERS	725 2-CYL.
ENGINE POWER	25 hp
BRANCH DIAMETER (cm)	15
WEIGHT (kg)	950
ROTOR	POWER MIXED ROTOR 8 HAMMERS / 4 BLADES
ROTOR WEIGHT (kg)	100
L X W X H (mm)	4000 x 1550 x 2115
FEED ROLLER WIDTH (mm)	250
LOADING HOPPER HEIGHT (mm)	700
REFERENCE	GSPYTHONP
MAINTENANCE KIT	KITPYTHONP

TECHNICAL DATA P. 34 - 35

PUMA P



**POWER MIXED
ROTOR**



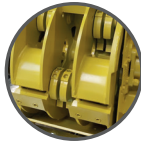
**BRANCH
DIAMETER**
16 cm



**AVERAGE
INPUT**
27m³/h



MOTORIZATION
KOHLER ECH980 EFI
V 38 hp

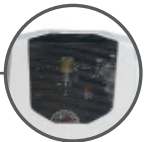


POWER MIXED ROTOR

12 hammers und 6 blades
guarantee an optimal
shredding

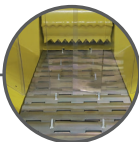
MOTOR

KOHLER ECH980 EFI V
38HP



FEED CONVOYER

40 cm wide reliable
carries the material
over the entire width
to the infeed roller



MAX. DIAMTER

Up to 16 cm



PUMA D

The PUMA is our bestseller in all its diversity!

Diesel, petrol and **100 % electric** (pp. 38-39), it is robust and powerful and able to shred diverse greenery with a max. diameter of 16 cm.

The PUMA is equipped with a **POWER MIXED ROTOR** equipped with 12 hammers and 6 blades. The control of the machine is operated via **TS.Cockpit**. The machine is also equipped with an **adjustable drawbar** containing the **parking brake**.

It also includes a wide geared **feed conveyor** and an **infeed roller**.



MOTORIZATION
KUBOTA 1505 V 25 hp

	PUMA P	PUMA D
ENGINE CAPACITY (cm³) - NUMBER of CYLINDERS	999 2-CYL.	1498 2-CYL.
ENGINE POWER	38 hp	25 hp
BRANCH DIAMETER (cm)	16	
WEIGHT (kg)	1230	1330
ROTOR	POWER MIXED ROTOR 12 HAMMERS / 6 BLADES	
ROTOR WEIGHT (kg)	150	
L x W x H (mm)	4370 X 1690 X 2360	
WIDTH OF FEED ROLLER (mm)	400	
LOADING HOPPER HEIGHT (mm)	750	
REFERENCE	GSPUMAP	GSPUMAD
MAINTENANCE KIT	KITPUMAP	KITPUMAD

TECHNICAL DATA P. 34 - 35

THE FUNCTIONS NO STRESS AND VARIOSTRESS

The two functions **No Stress** and **Variostress** automatically regulate the feeding speed depending on the thickness and type of material.

In use, No Stress is an autonomous system stopping both the feed roller and the feed conveyor when the amount of material is too extensive. While the rotor continues to shred the material. Once the rotor speed is back to normal the alimentatin starts all over again.

The No Stress settings are defined by the selected Variostress range, a total of three power levels ranging from the smallest/softest to the widest/thickest wood. Our shredders also contain a wheel which adjusts the speed of the feed conveyor and feed roller to regulate the speed of the material and thus the texture of the shredded material (slower for fine shredded material, faster for coarser shredded material).





JAGUAR D

JAGUAR PTO



**POWER MIXED
ROTOR**



**BRANCH
DIAMETER**
18 cm



**AVERAGE
INPUT**
32m³/h



MOTORIZATION
KUBOTA 1505 CRT V 45 HP



MOTORIZATION
POWER TAKE-OFF (PTO)

	JAGUAR D	JAGUAR PTO	JAGUAR D SR-TK
ENGINE CAPACITY (cm³) - NUMBER of CYLINDERS	1498 4-CYL.	-	1903 4-CYL.
ENGINE POWER	45 hp	-	45 hp
PERMITTED DIAMETER (cm)	18		
WEIGHT (kg)	1365	900	2100
ROTOR	POWER MIXED ROTOR 12 HAMMERS / 6 BLADES		
ROTOR WEIGHT (kg)	150		
L x W x H (mm)	4430 X 1780 X 2380	3000 X 1500 X 2350	4430 X 1780 X 2350
WIDTH FEED ROLLER (mm)	400		
LOADING HOPPER HEIGHT (mm)	760	800	830
REFERENCE	GSJAGUARD	GSJAGUARPTO	GSJAGUARDSRTK
MAINTENANCE KIT	KITJAGUARD	KITJAGUARPTO	KITJAGUARD

TECHNICAL DATA P. 34 - 35

JAGUAR D SR-TK



POWER MIXED ROTOR



BRANCH DIAMETER
bis zu 18 cm

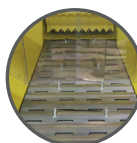


AVERAGE INPUT
32 m³/h



POWER MIXED ROTOR

12 hammers and 6 blades as well as a total weight of 150 kg offer a clean and powerful cut



FEED CONVOYER

An interlocked feed belt of 40 cm reliably carry the material over the entire width to the infeed roller



REMOTE CONTROL

The remote control permits a safe transportation to any place at any time



MOTOR

KUBOTA 1505 CRT V 45 hp



MOTORIZATION
KUBOTA 1505 CRT V 45 hp

The versions of our JAGUAR offer a variety of configurations: 45HP diesel version on chassis, PTO drive, tracks drive or 100 % electric (pp. 40-41).

All models are suitable for perfect shredding of green waste up to 18 cm in branch diameter. They are equipped with a powerful 150 kg **POWER MIXED ROTOR**, with of 12 hammers and 6 blades which shred the material with ease and eject it efficiently.

In addition to optimising fuel consumption and engine power, the JAGUAR is equipped with a **TS.Cockpit**. Its **parallelogram drawbar** is adjustable, and the **180° pivoting discharge chute** may be easily oriented. Thanks to the **crawlers with slope compensation** and the **standard remote control**, safe working and manoeuvring is possible at all times, even on difficult grounds.

WHY CHIPPERS WITH A TRACK CHASSIS ?

TS industrie range contains 2 crawlers models GS/JAGUAR D SR-TK (track with slope compensation) or the WS/18 D R-TK (track with rigid chassis).

The standard **remote control** enables all users to position the shredder easily and safely off-road: in the forest, on a slope or on uneven and unpaved ground.

The **powerful winch** offers further comfort and security.

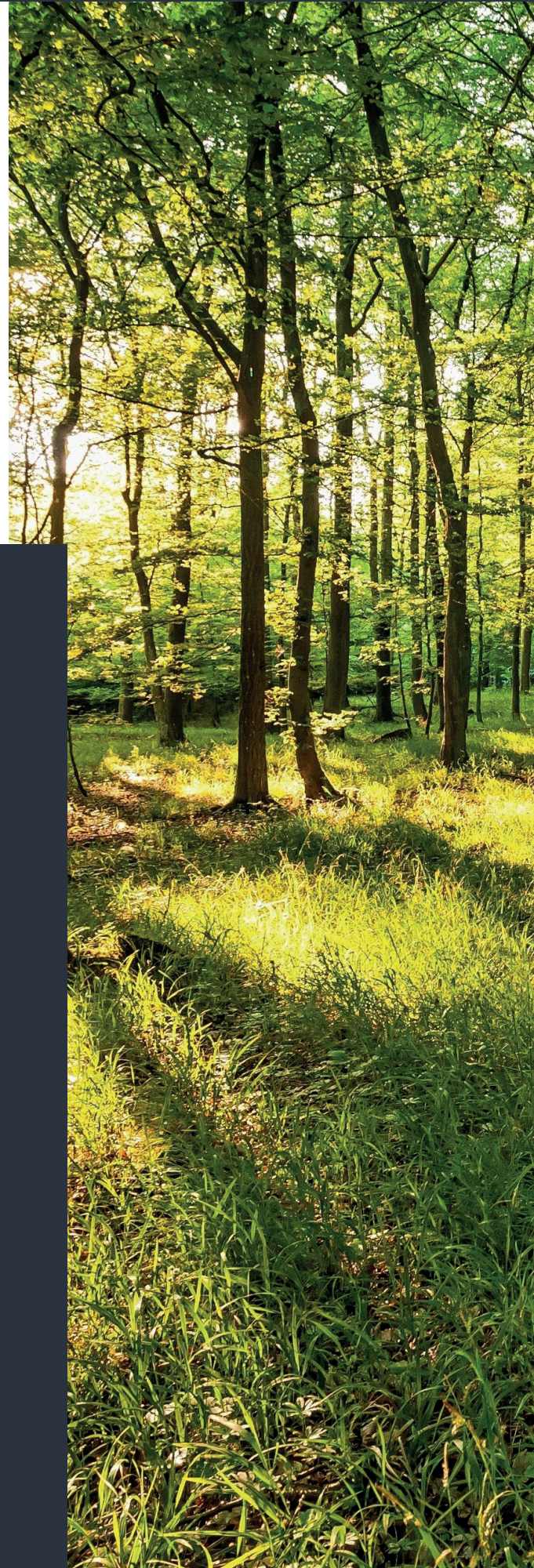
The **tracks may be separately expanded in width and counter the slopes.**

Locations away from paved roads are no obstacle with these TS models and the wide range of options, such as working spotlights.

The PANTHER D is a powerful addition to the product range of rotor shredders.

This machine is propelled with KOHLER 56HP diesel engine that drive a POWER MIXED ROTOR, equipped with 6 hammers and 12 blades to shred green waste up to 19 cm in diameter.

With a wide hopper and a 50 cm interlocked feed conveyer, work can be coordinated with several operators at the same time which means less time spent working on locations. The adjustable **parallelogram drawbar** facilitates transport with different towing vehicles. The **PILOT SYSTEM** offers a choice of three different power levels depending on the material shredded.



THE REDUCTION CO₂

Being future-oriented we continuously develop innovative features and options for our machines. When the operator says that the shredder was working 8 hours, the measurements actually show that the effective shredding time of the machine is about three hours out of that time. Based on this observation, we designed the CO₂ reduction sensor. This detection system, placed above the hopper, reliably lowers the engine speed when the operator is no longer present behind the machine.

HOW DOES THE CO₂ SENSOR WORK ?

Level 1: If there is no user behind the machine, the sensor detects it and automatically switches the motor to slow speed.

Level 2: The operator reappears behind the machine. The sensor registers his appearance and puts the motor up to the load speed programmed in advance. The feeding system starts. Within two seconds, the shredder is ready for use.

WHY INSTALL THE CO₂ SENSOR ON THE MACHINE ?

The reduction system of CO₂ offers many advantages for you: noticeable reduction of CO₂ emissions and fuel consumption of the machine, lowering the noise level while working, improvement of operator comfort and an extension of the service life by reducing the need for maintenance. The CO₂ reduction system is available from GS/JAGUAR (18 cm) to GS/COBRA (21 cm) rotor shredders.



MOTORIZATION
KOHLER KDI V 56 HP

**OPTION OF CO₂
REDUCTION**

see p. 28

FEED CONVOYER

An interlocked feed conveyor of 50 cm reliably transfers the material over the entire width to the feed roller

**POWER
MIXED ROTOR**

With 12 hammers and 6 blades, the rotor shreds material reliably

**CENTRAL
LUBRIFICATION
CONNECTION**



**POWER MIXED
ROTOR**



**BRANCH
DIAMETER**
19 cm



**AVERAGE
INPUT**
38m³/h

	PANTHER D
ENGINE CAPACITY (cm ³) - NUMBER of CYLINDERS	1903 3-CYL.
ENGINE POWER	56 hp
BRANCH DIAMETER (cm)	19
WEIGHT (kg)	2050
ROTOR	POWER MIXED ROTOR 12 HAMMERS / 6 BLADES
ROTOR WEIGHT (kg)	150
L x W x H (mm)	4510 x 2020 x 2360
FEED ROLLER WIDTH (mm)	400
LOADING HOPPER HEIGHT (mm)	760
REFERENCE	GSPANTHERD
MAINTENANCE KIT	KITPANTHERD

TECHNICAL DATA P. 34 - 35

The benchmark among rotor shredders is our COBRA D. The power and reliability of its **two available engines** (KOHLEL diesel 75 hp or KUBOTA petrol/gas in 88/94 hp) set the standard. Its **POWER MIXED ROTOR** with 16 hammers and 8 blades cuts branches up to 21 cm in diameter.

This model is equipped with an adjustable **parallelogram drawbar**. The **extra wide hopper** of over 1600 mm and the 50 cm wide **feed conveyor** allow multiple users to work simultaneously and without disturbance.



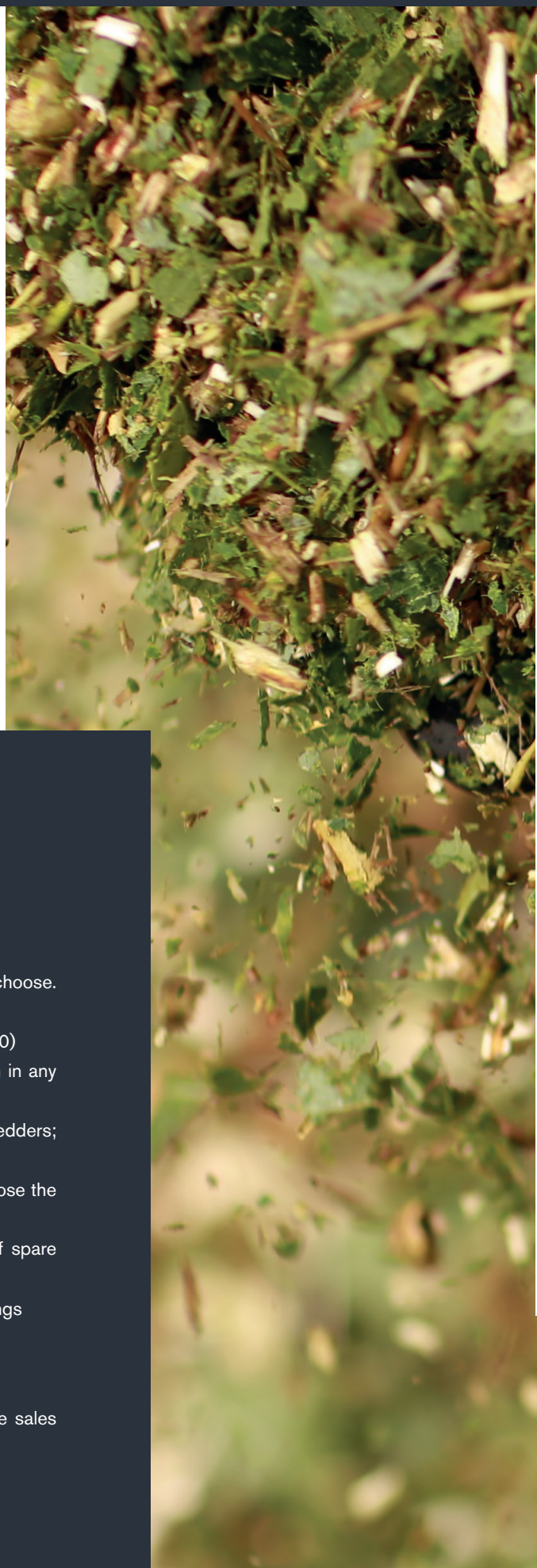
**POWER MIXED
ROTOR**



**AVERAGE INPUT
45m³/h**



**BRANCH
DIAMETER
21 cm**



AVAILABLE OPTIONS FOR YOUR CHIPPERS

Both our wood chippers and rotor shredders offer a variety of options to choose.

- **System of CO₂ reduction:** lower emissions and fuel savings (see p.30)
- **Discharge chute options:** extended or foldable - a suitable solution in any case
- **Spare wheel:** available for most of our wood chippers and rotor shredders; perfect for the working sites hard to access to.
- **Individual choice of colour:** our indoor paint shop allows you to choose the colour that fits your brand image
- **Maintenance kit/Replacements of knives:** guaranteed availability of spare parts
- **Led lights:** to continue the work even in early mornings or late evenings
- **Chassis options:** depending on models

For more information on our options and shredders, please contact the sales team.


POWER MIXED ROTOR

The largest of our rotors, equipped with 16 hammers and 8 blades

PILOT SYSTEM SWING

Reliable control of the GS/COBRA D


LARGE FEED CONVOYER

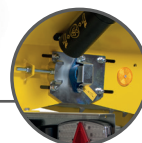
The widest hopper of its class combined with a wide feed conveyor of 50 cm and feed roller

GS/COBRA PG

Same features apply to this model



MOTORIZATION
KOHLER KDI 2504TCR V 75 hp

CENTRAL GREASING


	COBRA D	COBRA PG
ENGINE CAPACITY (cm³) - NUMBER of CYLINDERS	2504 4-CYL.	3800 4-CYL.
ENGINE POWER	75 hp	88 hp (PETROL) / 94 hp (GAS)
BRANCH DIAMETER (cm)	21	
WEIGHT (kg)	2105	
ROTOR	POWER MIXED ROTOR 16 HAMMERS / 8 BLADES	
ROTOR WEIGHT (kg)	270	
L x W x H (mm)	4710 X 1690 X 2500	
FEED ROLLER WIDTH (mm)	500	
LOADING HOPPER HEIGHT (mm)	700	
REFERENCE	GSCOBRAD	GSCOBRAPG
MAINTENANCE KIT	KITCOBRAD	KITCOBRAPG

TECHNICAL DATA, pp. 32 - 33

	ROTOR SHREDDERS WITH CHASSIS					
	GS/PREMIUM P	GS/TIGER P	GS/TIGER D	GS/PHYTON P	GS/PUMA P	
Referece	GSPREMIUMP	GSTIGERP	GSTIGERD	GSPYTHONP	GSPUMAP	
Branch Diameter (cm)	13	14	14	15	16	
Average input (m³/h)	13	17	17	22	27	
Engine	KOHLER CH730 V 25 hp / 18,5 kW	KOHLER CH730 V 25 hp / 18,5 kW	KUBOTA D902 V 25 hp / 18,5 kW	KOHLER CH-730 V 25 hp / 18,5 kW	KOHLER ECH-980 EFI V 38 hp / 28 kW	
Engine Capacity cm³/Number of cylinders	725 2-Cyl.	725 2-Cyl.	898 3-Cyl.	725 2-Cyl.	999 2-Cyl.	
Fuel	petrol	petrol	diesel	petrol	petrol	
Clutch	hydraulic	centrifugal force	centrifugal force	centrifugal force	centrifugal force	
Covering	ABS-hoods	FRP-hoods	FRP-hoods	FRP-hoods	FRP-hoods	
Diameter of the rotor (mm)	560	400	400	560	560	
Weight of the rotor (kg)	85	45	45	100	150	
Number of hammers	10	8	8	8	12	
Number of blades	2	2	2	4	6	
Width of the infeed roller (mm)	250	250	250	250	400	
Feed convoyer	No	400	400	400	400	
Diameter of the feed convoyer (mm)	340	340	340	340	340	
Number of axles	1	1	1	1	1	
Dimensions of tyres	155/70R13	155/70R13	155/70R13	165R13C	165R13C	
Fuel tank capacity (l)	30	17	17	32	32	
Consumption (l/h)	4	4	3	4	3.9	
Discharge chute	270°	180°	180°	180°	180°	
Height discharge of chute (mm)	2060	1850	1850	2115	2300	
Weight of machine (kg)	745	695	745	950	1230	
Total weight of road homologation (kg)	750	750	750	1000	1340	
Dimension of the hopper T x W (mm)	1500 x 1390	1600 x 1350	1600 x 1350	1600 x 1350	1600 x 1350	
Loading hopper height (mm)	715	750	750	700	750	
L x W x H Dimension of working-transport (mm)	3770 x 1600 x 2140	3560 x 1515 x 2060	3560 x 1515 x 2060	4000 x 1550 x 2115	4370 x 1690 x 2360	
Wheel Chock / upright unit	Standard / Standard	Standard / Standard	Standard / -	Standard / Standard	Standard / Standard	

ROTOR SHREDDERS WITH CHASSIS						ROTOR SHREDDERS PTO	ROTOR SHREDDERS WITH TRACKS
	GS/PUMA D	GS/JAGUAR D	GS/PANTHER D	GS/COBRA D	GS/COBRA PG	GS/JAGUAR PTO	GS/JAGUAR D SR-TK
	GSPUMAD	GSJAGUARD	GSPANTHERD	GSCOBRAD	GSCOBRAPG	GSJAGUARPTO	GS JAGUAR D SR-TK
	16	18	19	21	21	18	18
	27	32	38	45	45	32	32
	KUBOTA V1505 V 25 hp / 18,5 kW	KUBOTA V1505CRT V 45 hp / 33,57 kW	KOHLER KDI 1903TCR IN 56 hp / 42 kW	KOHLER KDI IN 75 hp / 55,4 kW 2504TCR	KUBOTA WG3800GL V 88 hp (petrol) 94 hp (gas)	PROPULSION min. 55 hp (From 80 hp, a reinforced gearbox is necessary)	KUBOTA V1505 CRT V 45 hp / 33,57 kW
	1498 4-Cyl.	1498 4-Cyl.	1861 3-Cyl.	2482 4-Cyl.	3800 4-Cyl.	-	1498 4-Cyl.
	diesel	diesel	diesel	diesel	petrol/gas	power take-off	diesel
	hydraulic	hydraulic	hydraulic	hydraulic	hydraulic	-	hydraulic
	FRP-hoods	FRP-hoods	FRP-hoods	FRP-hoods	FRP-hoods	-	FRP-hoods
	560	560	560	560	560	560	560
	150	150	150	270	270	150	150
	12	12	12	16	16	12	12
	6	6	6	8	8	6	6
	400	400	400	500	500	400	400
	400	400	500	500	500	400	400
	340	340	340	395	395	340	340
	1	1	1	1	1	-	-
	165R13C	175R14C	215R14C	215R14C	215R14C	-	-
	32	32	50	50	50 / 13 kg gas	-	32
	3.9	4		5	-	-	4
	180°	180°	180°	180°	180°	180°	180°
	2300	2330	2330	2250	2250	2330	2330
	1380	1450	2050	2105	2150	900	2100
	1400	1500	2200	2200	2200	-	-
	1600 x 1350	1600 x 1350	1600 x 1620	1600 x 1630	1600 x 1630	1600 x 1350	1600 x 1350
	750	760	760	700	700	800	830
	4370 x 1690 x 2360	4430 x 1780 x 2380	4510 x 2020 x 2360	4710 x 1960 x 2500	4710 x 1960 x 2500	3000 x 1500 x 2350	3000 x 1800 x 2400
	Standard / Standard	Standard / Standard	Standard / Standard	Standard / Standard	Standard / Standard	-	-



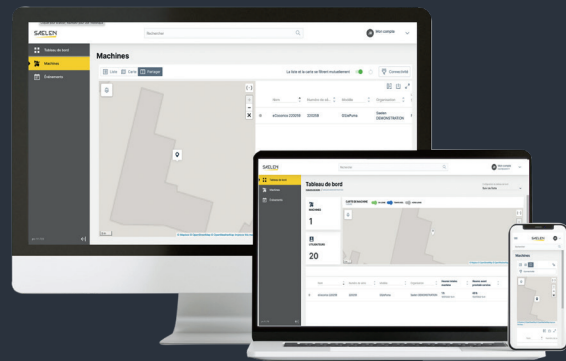
ELECTRIC SERIES

THE TS.COCKPIT AND THE MOBILITY PLATFORM

The standard **TS.Cockpit** enables users to control the machine on locations. You choose from three power levels and activate the activity sensor. Maintenance intervals and machine parameters are visible at all times. Possible error codes can easily be read out by operators.

These and other pieces of information can also be transferred to an IoT platform.

This enables you to call up the machine parameters of your shredder anytime and anywhere (subscription included for the first three years of use subject to warranty registration. Available as an option after three years).



PRESENCE SENSOR

All our electric shredders are equipped with a **Start & Stop button**, which you can complete with a presence **sensor**. This option optimises energy consumption and reduces noise disturbance about an average of 60 to 70 percent during operation.

The sensor is located above the hopper and points to the rear of the machine to detect the activity of operators. If nobody is detected behind the machine within ten, twenty or thirty seconds (programmable), the rotor stops and simultaneously recuperates energy. The feed conveyor and feed roller are also stopped. To restart the system, press the Start & Stop-button on the side.



PROVEN TS INDUSTRIE TECHNOLOGIES FOR ELECTRIC SHREDDERS

Electric shredders offer new ways of working while keeping the best practices of combustible:

- **Choice of the rotor speed/engine power:**



Low rotor speed and engine power



Average rotor speed and engine power



High rotor speed and engine power

A fourth option is customisable.

- **Start & Stop-button:** Energy recovery, energy saving, battery regeneration (only below a charge of 97 %), noise reduction by stopping the rotor, additional energy saving in combination with the option of the presence sensor (p. 38).
- **Charge of battery:** 100 % engine power regardless of the battery's state of charge. The available mobility platform enables the safe planning in your daily schedules (see TS.Cockpit, p. 20 & p. 36).
- **Hibernation mode:** Activation of the hibernation button when not in use of more than 15 days. Self-maintenance of battery state of charge (SoC) of 70 %. It preserves the batteries' state of health (SoH) in a long-term according to warranty conditions.
- **1 charging cycle = 100 % charged:** when talking about the charging cycle, it is a 100% charging, for example, a full cycle corresponds to a 60 % charge, then a 35 % charge and a final 5 % charge.




**POWER MIXED
ROTOR**

**BRANCH
DIAMETER**
Up to 16 cm

**AVERAGE
INPUT**
27 m³/h

MOTORIZATION
ELECTRIC 19 kW/31 HP

Our PUMA goes electric! Its lithium iron phosphate batteries drive a 19 kW motor (equivalent to 31 HP) that shreds your green waste up to a diameter of 16 cm. It is equipped with a POWER MIXED ROTOR consisting of 12 hammers and 6 blades, a system with a feed conveyor, a feed roller and an adjustable parallelogram drawbar.

The ePUMA is controlled by the TS.Cockpit, which provides all information about the shredder. With the option of the presence sensor, you can further optimise the energy savings achieved so far.

The perfect combination of TS INDUSTRIE'S know-how and electrics!

	ePUMA
MOTOR	LiPo 96V 180Ah ASYNCHRONOUS 19 kW (31 hp)
AUTONOMY	(up to) 1 WORKING DAY
BRANCH DIAMETER (cm)	16
WEIGHT (kg)	1470
ROTOR	POWER MIXED ROTOR 12 HAMMERS / 6 BLADES
ROTOR WEIGHT (kg)	150
L x W x H (mm)	4430 x 1780 x 2380
FEED ROLLER WIDTH (mm)	400
LOADING HOPPER HEIGHT (mm)	760
REFERENCE	GSEPUMA
MAINTENANCE KIT	KITSEPUMA

The eJAGUAR makes the POWER MIXED ROTOR electric! With 12 hammers, 6 blades and an electric engine (equivalent to 46HP), it is equipped with a **lithium iron phosphate battery**. After a full charge of nine hours, you have enough energy for up to one working day.

The shredder is equipped with the proven **feed convoyer** and the innovative **TS.Cockpit**, which provides all information about the machine. This service is accessible on site and online.



**MOTORIZATION
ELECTRIC**
28,5 kW/ 46 hp



**BRANCH
DIAMETER**
Up to 18 cm



**POWER
MIXED ROTOR**



**AVERAGE
INPUT**
32 m³/h

TECHNOLOGY OF LITHIUM-IRON- PHOSPHATE-BATTERIES

The batteries of our electric shredders employ the latest lithium iron phosphate technology. The safe concept ensures fire- and explosion-free use even in the event of damage of the cover protection.

During the period of ongoing inactivity the 'hibernation mode' should be activated to prolong the lifetime of the battery.

As for the recyclability and the life time of the battery, it is almost 100% recyclable after a life time of our shredder .



BATTERIES OF LITHIUM-IRON-PHOSPHATE

96 volt batteries for a 28.5 kW asynchronous motor

ACTIVITY SENSOR

Option to promote battery regeneration and energy saving

START & STOP-BUTTON

For an easy starting and stopping of the system

TS.COCKPIT

Centralisation of the steering, control of the machine and transfer of information to the mobility platform

	eJAGUAR
MOTOR	LIP 96V 300Ah ASYNCHRONOUS 28,5 kW (46 hp)
AUTONOMY	(up to) 1 WORKING DAY
BRANCH DIAMETER (cm)	19
WEIGHT (kg)	1590
ROTOR	POWER MIXED ROTOR 12 HAMMERS / 6 BLADES
ROTOR WEIGHT (kg)	150
L x W x H (mm)	4430 X 1780 X 2380
FEED ROLLER WIDHT (mm)	400
LOADING HOPPER HEIGHT (mm)	760
REFERENCE	GSEJAGUAR
MAINTENANCE KIT	KITGSEJAGUAR
TECHNICAL DATA, p. 47	



**POWER
MIXED ROTOR**



**BRANCH
DIAMETER**
Up to 19 cm



**AVERAGE
INPUT**
38 m³/h



MOTORIZATION
ELECTRIC 35 kW/ 56 hp



The ePANTHER is TS INDUSTRIE'S largest e-model.

It offers autonomy for up to two working days to shred your green waste up to 19 cm in diameter.

Thanks to its **lithium iron phosphate batteries**, its **35 kW asynchronous engine** (equivalent of 56 hp) and with a **feed conveyor of 50 cm**, the ePANTHER is your ideal partner.

The **adjustable parallelogram drawbar** facilitates transport and the **TS.Cockpit** allows you to control work both on site and remotely.

	ePANTHER
MOTOR	LIP 96V 360Ah ASYNCHRONOUS 35 kW (56 hp)
AUTONOMY	(up to) 2 WORKING DAYS
BRANCH DIAMETER (cm)	19
WEIGHT (kg)	2150
ROTOR	POWER MIXED ROTOR 12 HAMMERS / 6 BLADES
ROTOR WEIGHT (kg)	150
L x W x H (mm)	4510 x 2020 x 2380
FEED ROLLER WIDTH (mm)	400
LOADING HOPPER HEIGHT (mm)	760
REFERENCE	GSEPANTHER
MAINTENANCE KIT	KITGSEPANTHER





	e PUMA	e JAGUAR	e PANTHER
Permitted diameter (cm)	16	18	19
Average input (m³ /h)	27	32	38
Batteries	lithium iron phosphate 96 voltage - 180 ah	lithium iron phosphate 96 voltage - 300 ah	lithium iron phosphate 96 voltage - 360 ah
Mono phase charger	included	included	included
Engine	asynchronous	asynchronous	asynchronous
Engine power (kW)	19	28.5	35
Power compared to combustion engine (hp)	31	45	56
Power saving mode	yes	yes	yes
Clutch	no	no	no
Start & Stop	yes, manually	yes, manually	yes, manually
Warranty of battery	3 years resp. 1.000 hours at 85% soh	3 years resp. 1.000 hours at 85% soh	3 years resp. 1.000 hours at 85% soh
Charging time (h)	6	9	12
Autonomy	(up to) 1 working day	(up to) 1 working day	(up to) 2 working days
Average consumption (kW/h)	7	9	10
Weight of the machine (kg)	1470	1590	2150
Central lubrication system	yes	yes	yes
Drawbar	centrally height adjustable	centrally height adjustable	centrally height adjustable
Wheel Chock / upright unit	Standard / Standard	Standard / Standard	Standard/ Standard
L x W x H (mm)	4430 x 1780 x 2380	4430 x 1780 x 2380	4510 x 2020 x 2380
Diameter of the rotor (mm)	560	560	560
Weight of rotor (kg)	150	150	150
Number of blades	6	6	6
Number of hammers	12	12	12
Feed belt (mm)	400	400	500
Width of feed roller (mm)	400	400	400
Diameter of feed roller (mm)	360	360	360
Loading height hopper (mm)	760	760	760
Dimesions of hopper T x W (mm)	1600 x 1350	1600 x 1350	1600 x 1620
Discharge chute	180°	180°	180°
Height discharge chute (mm)	2330	2330	2330
Platform of mobility	Included	Included	Included
Available option	Presence sensor	Presence sensor	Presence sensor

HOW TO MAINTAIN YOUR ELECTRIC SHREDDERS?

For blades, hammers and counter-blades, hydraulic and trailer parts, the classic maintenance remains the same as for our shredders with combustion engines:

Regularly check:

- the belt tension
- Hammers and blades
- Lubrication

Engine maintenance is different, however, as it is powered by batteries. It is no longer necessary to check the fill levels or replace the oils and filters; the battery and its connections must be regularly checked through the diagnostic tool on the Power Box.

The golden rule that should always be followed is to switch off, unplug the shredder before cleaning and not use water!



WARRANTY FOR THE ELECTRIC MACHINES

Like all our other shredders, the electric shredders are guaranteed for three years, with the third year under the condition of registration it on our website. We may also offer an option of warranty extension for extra an two years .



VISIT OUR NEW WEBSITE



ts-industrie.eu



- Distributor platform
- Direct spare part webshop
- New design
- New features



WOOD SERIES

WOOD/SERIES



WS/16P

The wood chipper WS/16P is a real companion for all users with a driving licence equivalent of the German 'category B', as its weight is less than 750 kilograms. Its **folding hopper** makes the machine compact for transportation.

The cutting disc with two blades, in combination with the counter blades, provides a **clean cut** and produces even wood chips.

The **discharge chute**, which can be pivoted by 270°, offers you the necessary flexibility in all your working sites.



MOTORIZATION
KOHLER ECH 380
EFI PETROL V 38 HP



CUTTING
DISC



< 750 KG



BRANCH
DIAMETER
up to 16 cm

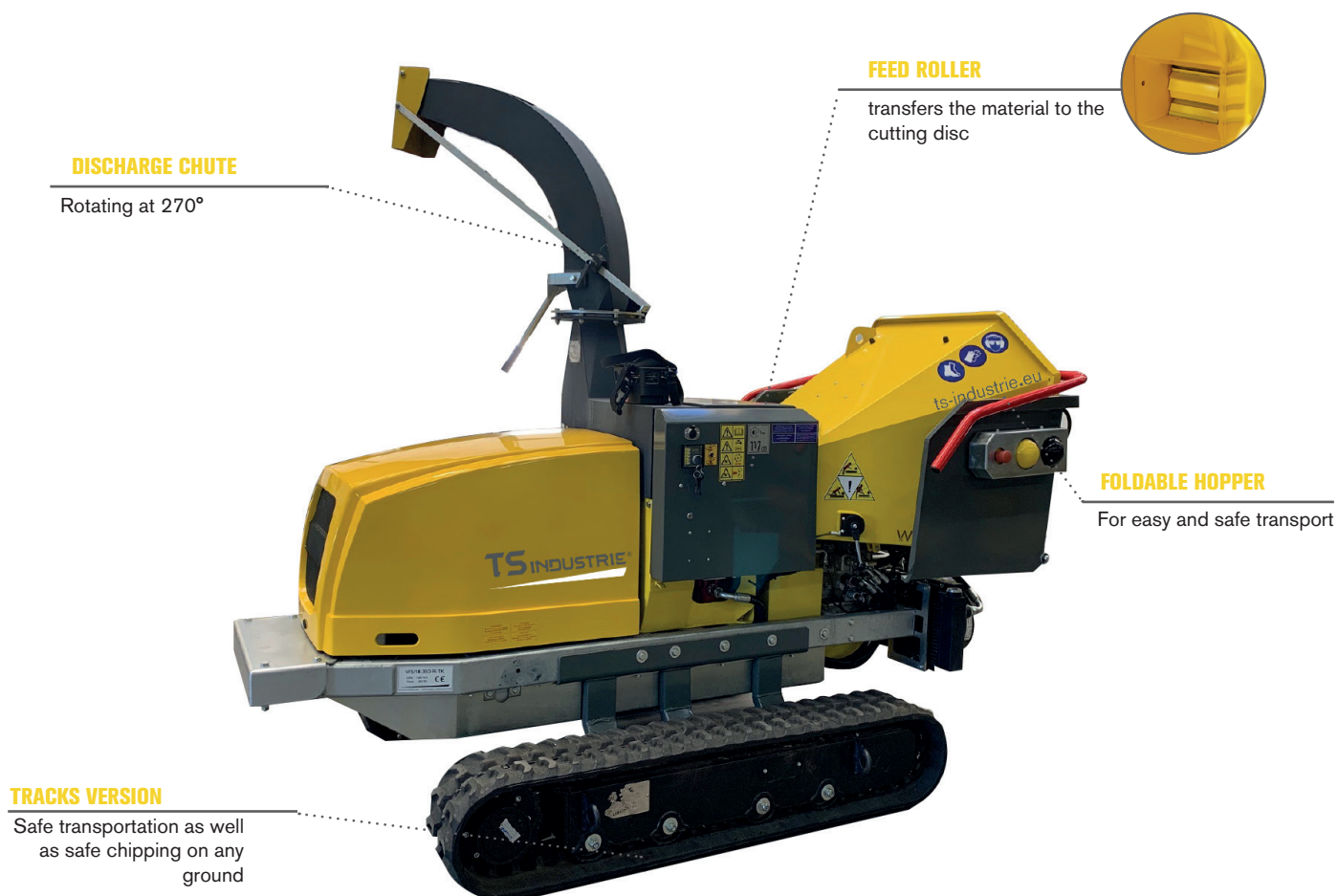
	WS/16P
ENGINE CAPACITY (cm³) - NUMBER of CYLINDERS	999 2-CYL.
ENGINE POWER	38 hp
BRANCH DIAMETER (cm)	16
WEIGHT (kg)	704
CUTTING SYSTEM	CUTTING DISC
CUTTING DISC DIAMETER (mm)	510
CUTTING DISC WEIGHT (kg)	50
L x W x H (mm)	3950 x 1400 x 2470
HOPPER DIMENSIONS T x W (mm)	1530 x 1075
LOADING HOPPER HEIGHT (mm)	700
REFERENCE	WS16P
MAINTENANCE KIT	KITWS16P

TECHNICAL DATA, pp. 58 - 59



WS/18 D R-TK

The WS/18 is a true all-rounder in term of configurations: in a fixed or turnable version or as a tracked chipper with remote control. Its **two feed rollers** catch the branches up to 18cm of diameter and carry them to the cutting disc. The **hopper** is **foldable** for easy transport. **Track mounted** and **radio-controlled**, the WS/18D R-TK provide access to any complicated working site.



CUTTING DISC



BRANCH DIAMETER
18 cm



MOTORIZATION
KUBOTA V1505-E4B 24,8HP

WS/18D


MOTORIZATION
KUBOTA 1505 V diesel 25 hp

WS/18DT


MOTORIZATION
KUBOTA 1505V 25 HP

The turnable configuration can be rotated at 270° to allow safe and ergonomic working environment away from traffic.

	WS/18D	WS/18DT	WS/18D R-TK
ENGINE CAPACITY (cm³) - NUMBER of CYLINDERS	1498 4-CYL.		
ENGINE POWER	25 hp		
BRANCH DIAMETER (mm)	18	18	18
WEIGHT (kg)	1085	1330	1800
CUTTING SYSTEM	CUTTING DISC		
CUTTING DISC DIAMETER (mm)	670	740	670
CUTTING DISC WEIGHT (kg)	92.5	142	92.5
L x W x H (mm)	4000 x 1560 x 2530	4000 x 1630 x 2555	3100 x 1575 x 2500
DIMENSIONS HOPPER T x W (mm)	1530 x 1080		
LOADING HOPPER HEIGHT (mm)	700	700	700
REFERENCE	WS18D	WS18DT	WS18DRTK
MAINTENANCE KIT	KITWS18D	KITWS18DT	KITWS18D

TECHNICAL DATA, pp. 58 - 59



WS/20DT LINE



**CUTTING
DISC**



**BRANCH
DIAMETER**
20 cm



MOTORIZATION
KOHLER KDI
1903 V 56 hp

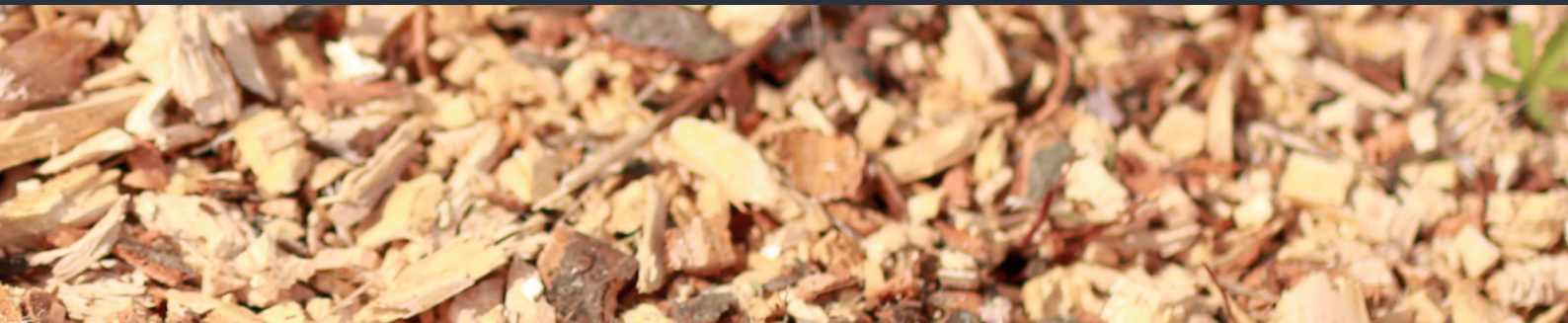


The WS/20DT is an updated version of the WS/20DT, equipped with TS.Cockpit and handy centralised lubrication system. Its high-torque diesel engine, supplies asufficient power for any working conditions. The TS.Cockpit controls work processes and the indicates all relevant information on an ergonomic screen with colourful display.

The rotating turret and the 270° swivelling discharge chute offer maximum working comfort, flexibility and safety. The large feed hopper facilitates the feeding of branches and pruning and can be folded to save space during transport. Maintenance of the machine is simplified by the well thought-out design. The wide service openings are designed to optimise accessibility for maintenance and service. The machine is available with an optional double axle and in its PTO version.

WS/20DT LINE	
ENGINE CAPACITY (cm³) / NUMBER OF CYLINDERS	1861 - 3 ZYL.
ENGINE POWER	42 kW / 56 PS
BRANCH DIAMETER (mm)	20
WEIGHT (kg)	1990
CUTTING SYSTEM	HACKSCHEIBE
CUTTING DISC DIAMETER (mm)	900
CUTTING DISC WEIGHT (kg)	218
L x W x H (mm)	4800 x 2000 x 2760
DIMENSION OF HOPPER T x W (mm)	1540 x 1330
LOADING HOPPER HEIGHT (mm)	870
REFERENCE	WS20DT
COMFORT-KIT	KITWS20DT

TECHNICAL DATA, pp. 58 - 59



**CUTTING
DISC**



**BRANCH
DIAMETER**
23 cm



**MOTORIZATION
PTO**

PTO

TS INDUSTRIE offers a wide range of proven cutting disc chippers with PTO drive shaft.

These models offer the benefits of all the existing product in our combustion range.

The PTOT-versions of WS/20 and WS/23 are available with 270° turnable turrets.



	10PTO	15PTO	18PTO	20PTO	20PTOT	23PTO	23PTOT
POWER TAKE-OFF	PTO 540 R/min	PTO 540 R/min	PTO 540 R/min	PTO(T) 1000 R/min		PTO 1000 R/min	
CUTTING DISC DIAMETER (mm)	450	560	670	900		900	
CUTTING DISC WEIGHT (kg)	49	50	92.5	218		218	
FEED ROLLER WIDTH (mm)	200	160	215	310		310	
FEED ROLLER DIAMETER (mm)	140	140	140	240		240	
ROTATING DISCHARGE CHUTE (°)	270	270	270	270		270	
HOPPER DIMENSIONS T x W (mm)	1500 x 700	1500 x 965	1530 x 1080	1500 x 1290		1500 x 1290	
LOADING HOPPER HIGHT (mm)	630	630	700	870		870	
REFERENCE	WS10PTO	WS15PTO	WS18PTO	WS20PTO	WS20PTOT	WS23PTO	WS23PTOT
MAINTENANCE KIT	KITWS10PTO	KITWS15PTO	KITWS18PTO	KITWS20PTO	KITWS20PTOT	KITWS23PTO	KITWS23PTOT



WS/23DT



CUTTING DISC



BRANCH DIAMETER
23 cm



MOTORIZATION
KOHLER KDI V
2504TCR 75 hp

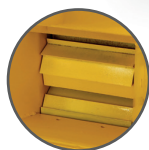


TURNABLE TOWER

The 270° turnable turret enables safe and ergonomic work

TWIN AXLE CHASSIS

Uncompromising stability during operation and transport



FEED ROLLER

Powerful hydraulic feeding



FOLDABLE HOPPER

For easy and safe transport



The WS/23DT is the most powerful wood chipper of TS INDUSTRIE.

On a two-axle braked chassis with **adjustable drawbar** and **automatic hitch** as well as a **270° rotation discharge chute**, this model meets all requirements for all type of your working sites.

The chipper is equipped with an **extra-large ejection flap** and two sturdy **feed rollers**. The machine contains a **PILOT SYSTEM** which adapts the chipping power to the needs of the operator and the material. It results in operational and energy savings.

RECOMMENDED PROTECTION FOR THE USE OF A CHIPPER

The right personal equipment is essential for any job!

GLOVES

Essential for maximum safety, reinforced backhand area, close-fitting and cut-resistant

SAFETY SHOES

With padded shaft, ergonomic insole, piercing-resistant midsole, steel cap, indirect cut protection, slip-resistant tread sole for slip resistance

HELMET

Integral solution with hearing protection and face shield

WORKING JACKET

Well visible, resistant for cutting and piercing, with ventilation for optimum comfort and waterproof for any conditions

WORKING TROUSERS

Well visible, resistant for cutting and piercing, with ventilation for optimum comfort and waterproof for any conditions



	WS/23DT
ENGINE CAPACITY (cm³) / NUMBER OF CYLINDERS	2405 4-CYL.
ENGINE POWER	75 hp
BRANCH DIAMETER (cm)	23
WEIGHT (kg)	2340
CUTTING SYSTEM	CUTTING DISC
CUTTING DISC DIAMETER (mm)	218
CUTTING DISC WEIGHT (kg)	900
L x W x H (mm)	4900 x 1960 x 2680
HOPPER DIMENSIONS T x W (mm)	1540 x 1290
REFERENCE	WS23DT
MAINTENANCE KIT	KITWS23DT

TECHNICAL DATA PP. 58 - 59

TECHNICAL DATA

WOOD CHIPPERS WITH CHASSIS

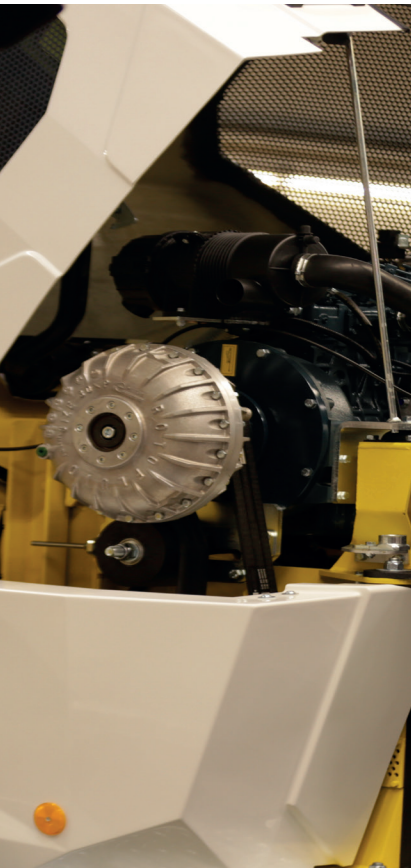
	WS/16 P	WS/18 D	WS/18 DT	WS/20 DT LINE	WS/23 DT	
Reference	WS16P	WS18D	WS18DT	WS20DTLINE	WS23DT	
Branch Diameter (cm)	16	18	18	20	23	
Motor/Engine	KOHLER EFI 38 hp / 28,3 kW	KUBOTA V1505 25 hp / 18,5 kW	KUBOTA V1505 25 hp / 18,5 kW	KOHLER V KDI 1903 56 hp / 42 kW	KOHLER KDI 2504TCR 75 hp / 55,4 kW	
Engine Capacity (cm³) - Number of Cylinders	999 cm³ / 2-Cyl.	1498 cm³ / 4-Cyl.	1498 cm³ / 4-Cyl.	1861 cm³ / 3-Cyl.	2482 cm³ / 4-Cyl.	
Fuel	petrol	diesel	diesel	diesel	diesel	
Clutch	motor base	freewheel	freewheel	freewheel	freewheel	
Covering	metal safety case	polyester resion safety case	polyester resion safety case	polyester resion safety case	polyester resion safety case	
Diameter of the cutting disc (mm)	510	670	740	900	900	
Weight of the cutting disc (kg)	50	92.5	142	218	218	
Blades	2	2	2	2	2	
Feed roller	2	2	2	2	2	
Width of the feed roller (mm)	240	215	245	310	310	
Diameter of the feed roller (mm)	245	140	140	240	240	
Number of axles	1	1	1	1 or 2 (optional)	2	
Dimensions of tyres	155/70 R13	165R13	225/55 R12C	205R14C / 185R14C	185 R14C	
Fuel tank capacity (l)	17 l	30 l	20 l	50 l	50 l	
Consumption	4,3 l/h	3,9 l/h	3,9 l/h	4,1 l/h	5 l/h	
Discharge chute	270°	270°	270°	270°	270°	
Height discharge chute (mm)	2440	2300	2500	2680	2680	
Turnable tower	-	-	270°	270°	270°	
Weight of the machine (kg)	704	1085	1330	1990	2340	
Total weight permitted on the chassis (kg)	75	110	1350	2000 oder 2200	2400	
Dimension of the hopper T x W (mm)	1530 x 1075	1530 x 1080	1530 x 1080	1540 x 1290	1540 x 1290	
Loading Height hopper (mm)	700	700	700	870	870	
L x W x H Working position (mm)	3950 x 1400 x 2470	4000 x 1560 x 2530	4000 x 1630 x 2555	4800 x 2000 x 2760	4900 x 1960 x 2680	
L x W x H Dimension of working-transport (mm)	3550 x 1400 x 2470	3485 x 1560 x 2530	3495 x 1630 x 2555	4295 x 2000 x 2760	4330 x 1960 x 2680	
Shim / upright unit	series / series	series / series	series / series	series / series	series / series	

WOOD CHIPPERS - PTO

WOOD CHIPPER ON TRACKS CHASSIS

	WS/10 PTO	WS/15 PTO	WS/18 PTO	WS/20 PTO WS/20 PTOT	WS/23 PTO WS/20 PTOT	WS/18 D R-TK
	WS10PTO	WS15PTO	WS18PTO	WS20PTO WS20PTOT	WS23PTO WS23PTOT	WS18DR-TK
	15	15	18	20	23	18
	PTO power (max. permitted) 60 hp	PTO power (max. permitted) 60 hp	PTO power (max. permitted) 70 hp	PTO power (max. permitted) 80 hp	PTO power (max. permitted) 80 hp	KUBOTA V1505 25 hp / 18,6 kW
	required speed 540 R/min	required speed 540 R/min	required speed 540 R/min	required speed 1000 R/min required speed 540 R/min	required speed 1000 R/min required speed 540 R/min	1498 cm ³ / 4-Cyl.
	-	-	-	-	-	diesel
	-	-	-	-	-	freewheel
	metal safety case	metal safety case	metal safety case	metal safety case	metal safety case	polyester resin safety case
	450	560	670	900	900	670
	49	50	92.5	218	218	92.5
	2	2	2	2	2	2
	2	2	2	2	2	2
	200	160	215	310	310	215
	140	140	140	240	240	140
	-	-	-	-	-	-
	-	-	-	-	-	-
	-	-	-	-	-	35 l
	-	-	-	-	-	3,9 l/h
	270°	270°	270°	270°	270°	270°
	2000	2000	2000	2550	2550	2520
	-	-	-	270° in model - 20PTOT	270° in model - 23PTOT	-
	390	550	590	1100 - 20PTOT = 1300	1100 - 23PTOT = 1300	1800
	-	-	-	-	-	-
	1500 x 700	1500 x 965	1530 x 1080	1500 x 1290	1500 x 1290	1530 x 1080
	700	630	700	870	870	700
	1800 x 800 x 1930	1600 x 1200 x 2100	1700 x 1400 x 2500	3000 x 1560 x 2600	3000 x 1560 x 2600	3100 x 1575 x 2500
	1800 x 800 x 1930	1600 x 1200 x 2100	1700 x 1400 x 2500	3000 x 1560 x 2600	3000 x 1560 x 2600	3100 x 1575 x 2500
	-	-	-	-	-	-

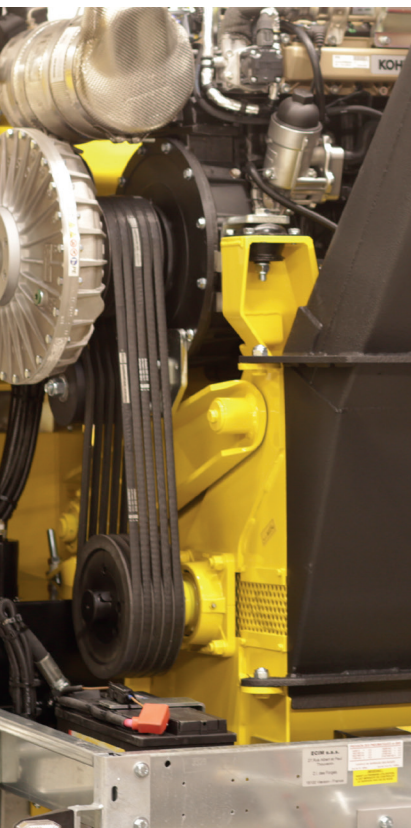
SERVICE & WARRANTY



All our shredders come with a technical manual. Each manual gives you information on how to maintain your shredders.

Remember to have your shredders serviced by specialist companies and only use our spare parts.

Find all the information you need to maintain your shredder on our website.



**Order your
spare parts
directly from
our website.**

KEY CONTACT

Valentina SANDULOVA

Export Sales Manager

+49 1714033392

vsandulova@ts-industrie.eu

SALES

ADMINISTRATION

Tanja WILKE

+49 32221096131

kontakt@ts-industrie.eu

SPARE PARTS

Ingo SCHUMACHER

+49 15231391355

ischumacher@ts-industrie.eu

AFTER SALES AND TECHNICAL SUPPORT

Sascha WIEDEMANN

+49 15231391355

swiedemann@ts-industrie.eu

Stefan KOSCHLIK

+49 32221096131

skoschlik@ts-industrie.eu





TS INDUSTRIE GmbH

Industriering Ost 42
47906 Kempen

Tel. +49 3222 1096 131
kontakt@ts-industrie.eu
www.ts-industrie.eu

All technical data, dimensions and weights are non-binding. Some of the illustrations show additional equipment.